

# Appending XBRL Instances

By Charles Hoffman, CPA

This document walks you through appending XBRL instances to another XBRL instance essentially combining facts into what amounts to one fact database. This is a basic example where facts are added for the same entity.

## STEP 1: Start Pesseract, Open XBRL instance.

Open the Pesseract application and the main form is displayed and the “Home” tab of the menu ribbon is displayed. Press the “Open” icon and then “Open XBRL instance”. Press the browse button (with the three dots) and open the file:

\\AppendInstances\_SameCompany\RollUp-SampleInstance.xml

The XBRL instance is loaded:

The screenshot shows the Pesseract application interface. The main window displays a table titled "Property, Plant, and Equipment, by Component" with columns for "2010-12-31" and "2009-12-31". The table includes rows for Land, Buildings, Net, Furniture and Fixtures, Net, Computer Equipment, Net, and Other Property, Plant and Equipment, Net, with a total row at the bottom.

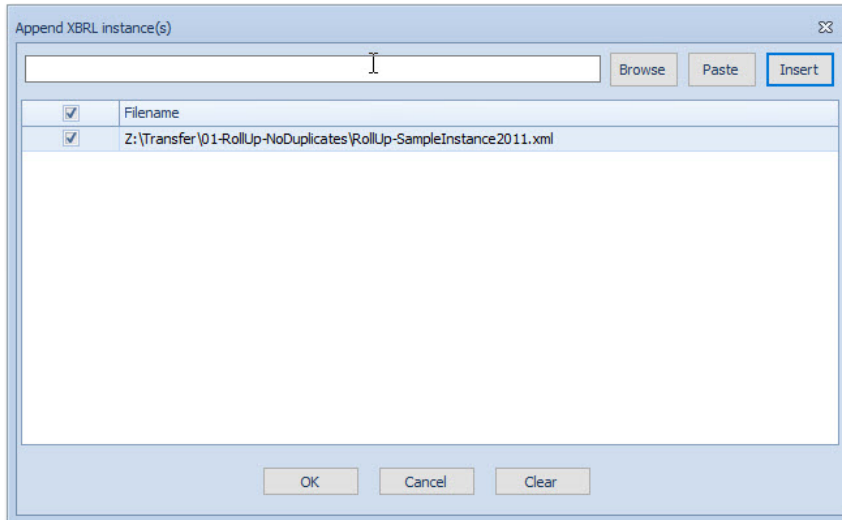
Property, Plant and Equipment, by Component (Line Items)	2010-12-31	2009-12-31
<b>Property, Plant and Equipment, Net (Roll Up)</b>		
Land	5,347,000	1,147,000
Buildings, Net	244,508,000	366,375,000
Furniture and Fixtures, Net	34,457,000	34,457,000
Computer Equipment, Net	4,169,000	5,313,000
Other Property, Plant and Equipment, Net	6,702,000	6,149,000
<b>Property, Plant and Equipment, Net, Total</b>	<b>295,183,000</b>	<b>413,441,000</b>

This is nothing unique, you have simply loaded an XBRL instance into the application.

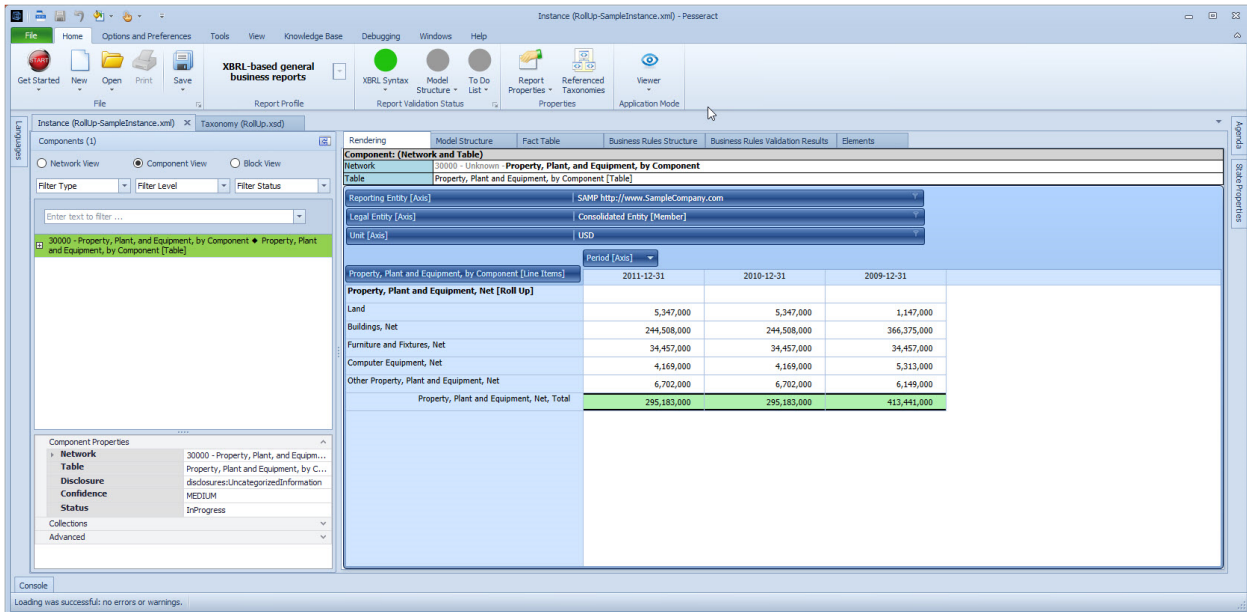
## STEP 2: Append another XBRL instance to existing XBRL instance.

Next we are going to append information from another XBRL instance into this XBRL instance.

On the Home tab, select the “Open” menu item again, but this time select “Append XBRL instance”. This will open the “Append XBRL instance(s)” form. Press the “Browse” button and select the file “RollUp-SampleInstance2011.xml”. Then press the “Insert” button. Your form should look like the following:

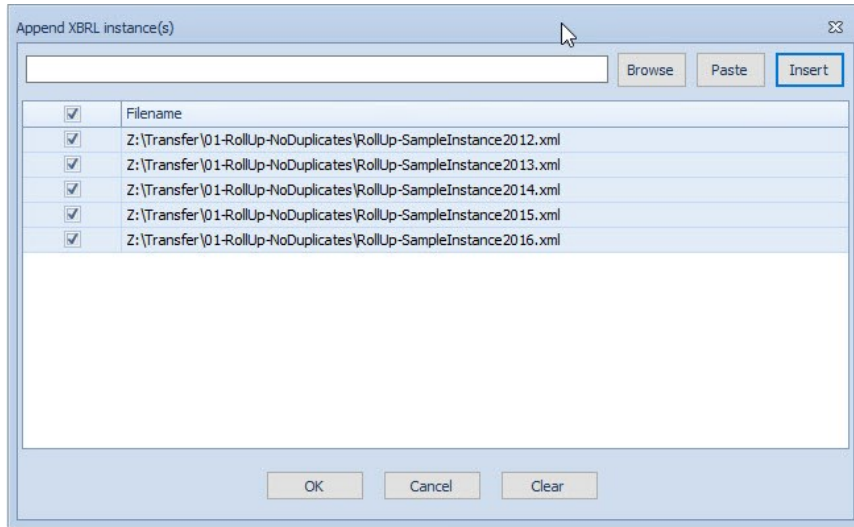


Next, press the OK button. The XBRL instance you selected will be appended into the existing XBRL instance and you should see this:

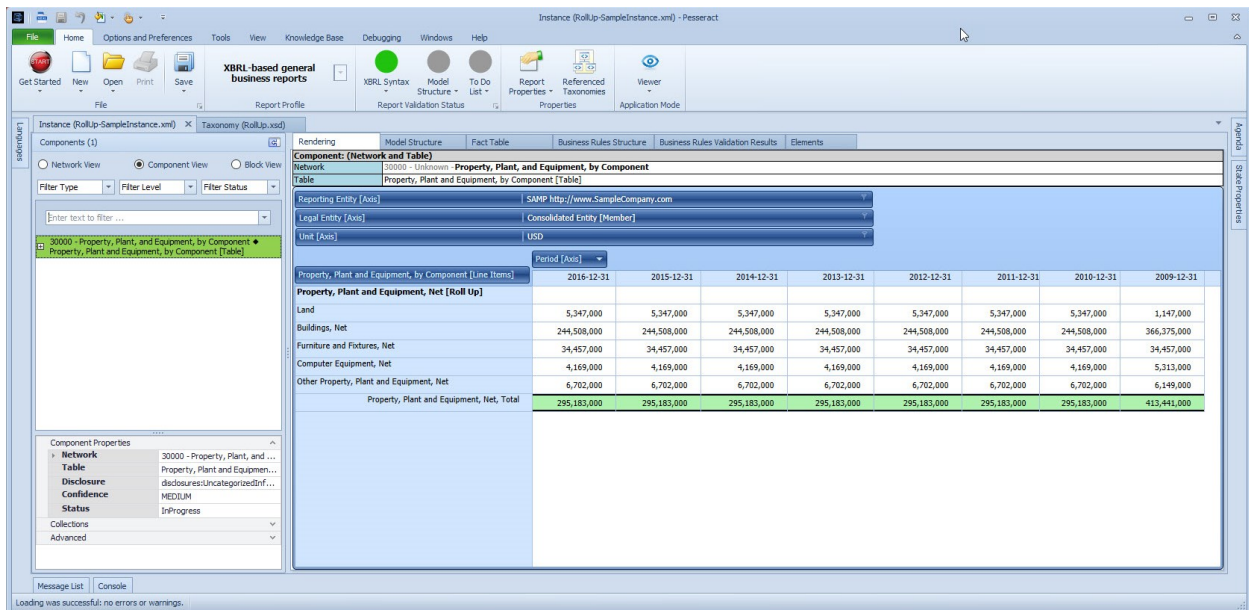


### STEP 3: Append several other XBRL instances.

Now we are going to append several other XBRL instances into the existing XBRL instance. Press “Open” and then “Append XBRL instance” again on the menu. This time insert these five XBRL instances one at a time. You form should look like the following:

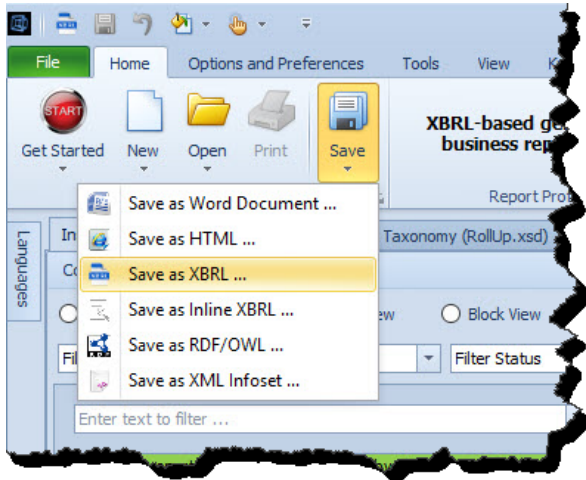


Now, press OK again and all those XBRL instances will be appended to the existing XBRL instance in memory. After they are all loaded you should see something like this:



## STEP 4: Saving the combined information.

You can save your new XBRL instance information. From the Home menu select “Save” and then “Save as XBRL...”



Pesseract is a fact database. Try the other appending examples where you append information from multiple documents, create normalized comparisons, etc.

Using XBRL Formula XBRL instances can be chained together into a sequence.