

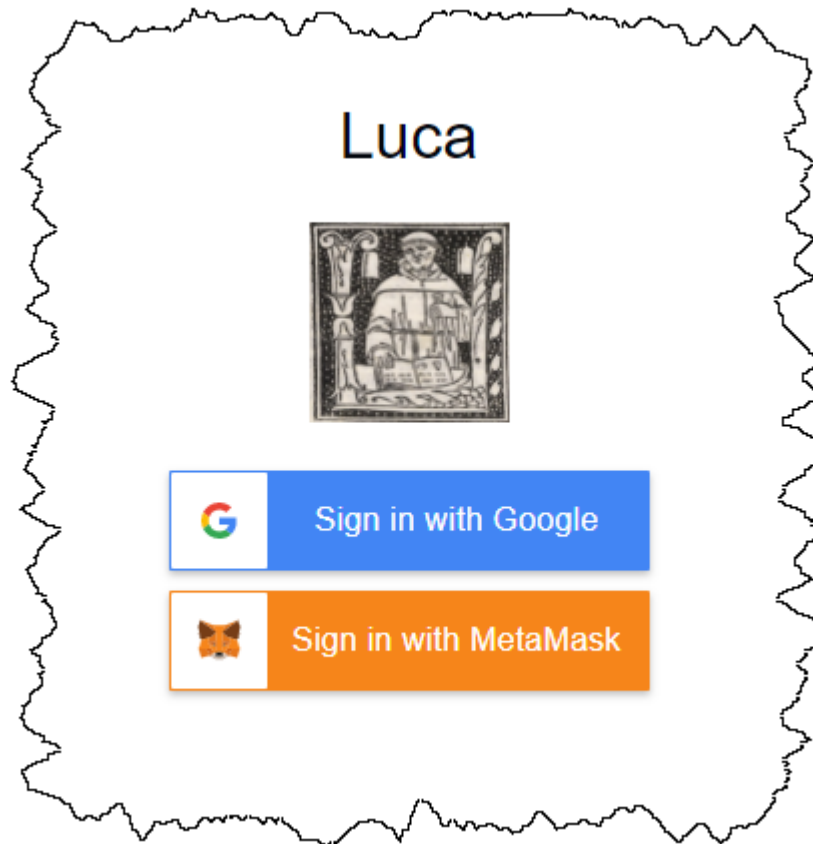
Common Elements of Financial Statement Tutorial

This tutorial walks you through creating a very basic financial report for the *Common Elements of a Financial Statement*¹ using a web application called Luca.

This tutorial introduces two new ideas. First, it expands on the notion of a BASE TAXONOMY when creating XBRL-based financial reports. Second, this tutorial introduces the notion of hypercubes when creating financial reports.

To use the Luca web application, navigate to the following URL in your browser:

<http://luca.yaxbri.com/>



Currently you can sign in using Google sign in or you can use the MetaMask crypto currency wallet. Simply click "Sign in with Google", select the Google account (gmail account) that you want to sign in with, and you will be logged into the application using that Google account. Alternatively, you can sign in using MetaMask by connecting Luca to your MetaMask wallet.

¹ *Common Elements of Financial Statements*,
http://xbrlsite.azurewebsites.net/2020/intermediate/common/common_ModelStructure.html

If you don't have MetaMask, you can use *How to Install and Use MetaMask*² to understand that.

Note that the **Accounting Equation Tutorial**³ showed you how to input information into Luca manually. The **SFAC 6 Tutorial**⁴ taught you how to use the Luca import functionality. It is highly recommended that you work through both of those tutorials before you undertake this tutorial.

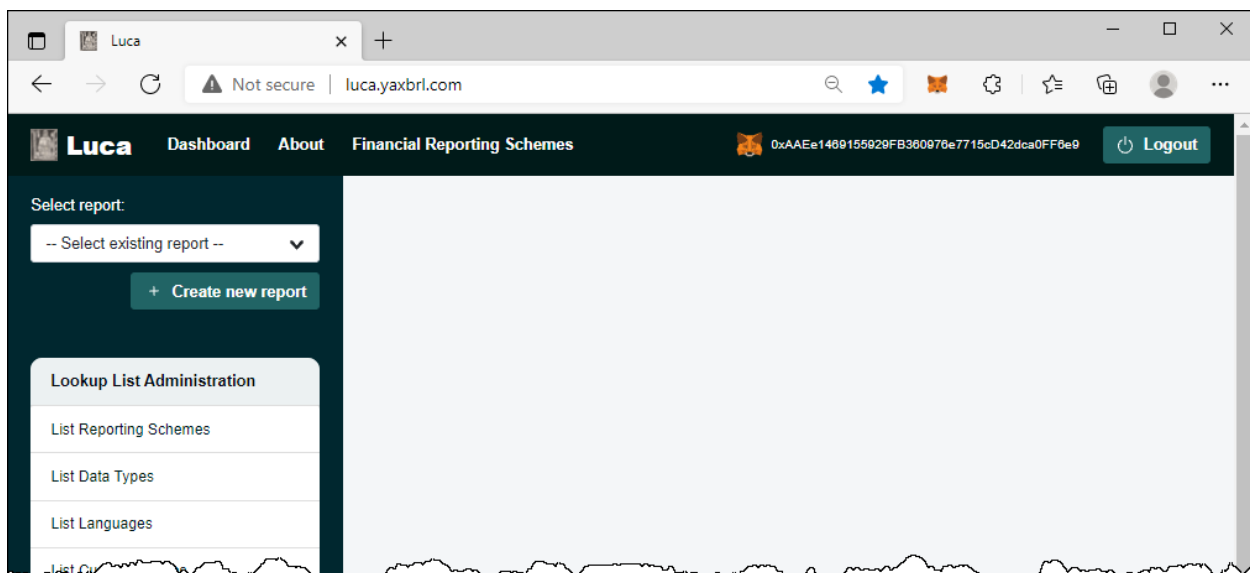
Luca is not just a GUI application. There is also an API interface to Luca. And with Luca, you can generate XBRL-based financial reports or (coming soon) generate a PDF, HTML, Microsoft Word, or Google Documents version of such reports. Fundamentally, Luca is a rules-based expert system API and a GUI for creating financial reports.

There are four primary objectives of this tutorial.

- The first objective is to consolidate your understanding of how to create an entire XBRL-based financial report from importing information from Excel spreadsheets.
- The second objective is to help you build on your understanding of the logical model of a financial report.
- The third objective is to consolidate your understanding of the difference between a LOCAL report model and an IMPORTED base taxonomy.
- The fourth objective is to help you understand the sorts of information you can enter into the application by examining the Excel spreadsheets you use for importing the Common Elements of Financial Statements report information.

Start here:

After you sign in, in your browser window you will see something similar to the following:



² WeTrust, *How to Install and Use MetaMask*, <https://blog.wetrust.io/how-to-install-and-use-metamask-7210720ca047>

³ Accounting Equation Tutorial, <http://xbri.site.azurewebsites.net/2021/luca/AccountingEquation-Tutorial.pdf>

⁴ SFAC 6 Tutorial, <http://xbri.site.azurewebsites.net/2021/luca/SFAC6-Tutorial.pdf>

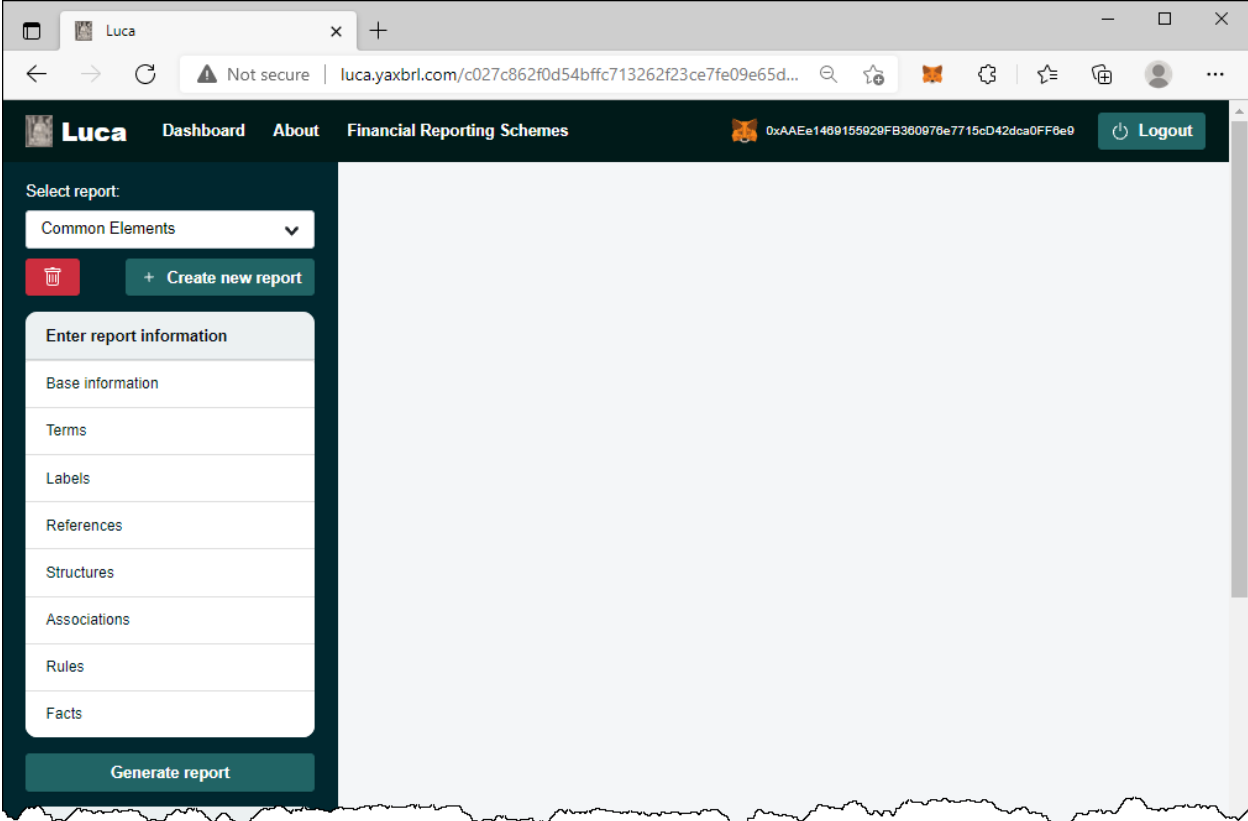
From the left and side of the screen notice the green “Create new report” button. Click that button to create a new report and the following form will be shown:



In the report name field enter the name of the report which you would like to create. We will be creating the Common Elements of Financial Statements report, so enter “Common Elements” or something like that.

Press the green “Save” button to create the new report.

A shell has been created for your report and your browser application should look something like what you see below. Note your “Common Elements” report is selected and there is a menu of information which needs to be entered to create the report displayed.



We are trying to keep this tutorial as simple as possible. We encourage you to follow each step exactly in order to get the most out of this tutorial. We will build on this foundation in further tutorials that

increase the complexity of the financial report being created. This tutorial simply walks you through the basics of some specific tasks.

Also recognize that Luca is a work in progress and incremental improvements will be made to make the application easier to use and increase functionality.

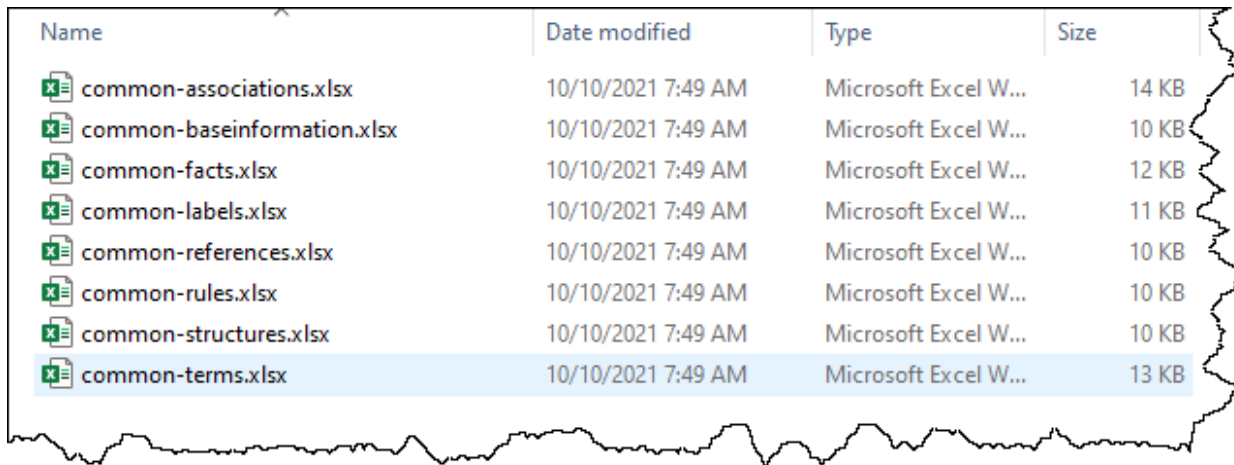
Let's get started.

Step 1: Obtain the import files.

The first thing you need to do for this tutorial is to download the import files that will be used. You can get that ZIP archive here:

<http://xbrlsite.azurewebsites.net/2021/luca/common-import.zip>

Download the file, unzip the file into a folder, and your files should look something like this:



We already covered the import steps in detail in the SFAC 6 tutorial. If you need a refresher on those exact steps, please work through that tutorial again. In this tutorial we not going to cover every detail.

Step 2: Import Basic information.

Import the base information: (common-baseinformation.xlsx)

If you open the Excel spreadsheet you will see the information below:

| Code | NamespacePrefix | NamespaceIdentifier | SchemaLocation | DefaultLanguage | TaxonomyDescription |
|--------|-----------------|--------------------------------|-----------------------------------------------------------------------|-----------------|-------------------------------------|
| Local | report | http://www.xbrlsite.com/report | report.xsd | en | Report using Common Elements |
| Import | common | http://www.xbrlsite.com/common | http://xbrlsite.azurewebsites.net/2020/intermediate/common/common.xsd | en | Common Elements of Financial Report |

Note that the first row has the Code of “Local” which provides information about the local, or report model, taxonomy that will eventually be created. That report model will have the namespacePrefix “report”, the NamespaceIdentifier “http://www.xbrlsite.com/report”, the SchemaLocation “report.xsd” (you can name that file anything that you want), the DefaultLanguage is “en” which indicates English, and the TaxonomyDescription is “Report using Common Elements”.

The second row has information about the base taxonomy we will be referencing in that report model which will be the base taxonomy *Common Elements of Financial Statement*. You can see information about that XBRL taxonomy here⁵.

| # | Report Element Label | Report Element Category | Period Type | Balance Type | Report Element Name |
|----|-------------------------------------------------|-------------------------|-------------|--------------|-----------------------------------------------------------------------------------------------------------------|
| 1 | 01-Balance Sheet | Network | | | http://www.xbrlsite.com/common/role/BalanceSheet |
| 2 | Balance Sheet [Hypercube] | Hypercube | | | common:BalanceSheetHypercube |
| 3 | Balance Sheet [Line Items] | LineItems | | | common:BalanceSheetLineItems |
| 4 | Assets [Roll Up] | Abstract | | | common:AssetsRollUp |
| 5 | Current Assets | Concept (Monetary) | As Of | Debit | common:CurrentAssets |
| 6 | Noncurrent Assets | Concept (Monetary) | As Of | Debit | common:NoncurrentAssets |
| 7 | Assets | Concept (Monetary) | As Of | Debit | common:Assets |
| 8 | Liabilities and Equity [Roll Up] | Abstract | | | common:LiabilitiesAndEquityRollUp |
| 9 | Liabilities [Roll Up] | Abstract | | | common:LiabilitiesRollUp |
| 10 | Current Liabilities | Concept (Monetary) | As Of | Credit | common:CurrentLiabilities |
| 11 | Noncurrent Liabilities | Concept (Monetary) | As Of | Credit | common:NoncurrentLiabilities |
| 12 | Liabilities | Concept (Monetary) | As Of | Credit | common:Liabilities |
| 13 | Equity [Roll Up] | Abstract | | | common:EquityRollUp |
| 14 | Equity Attributable To Controlling Interests | Concept (Monetary) | As Of | Credit | common:EquityAttributableToControllingInterests |
| 15 | Equity Attributable to Noncontrolling Interests | Concept (Monetary) | As Of | Credit | common:EquityAttributableToNoncontrollingInterests |
| 16 | Equity | Concept (Monetary) | As Of | Credit | common:Equity |
| 17 | Liabilities and Equity | Concept (Monetary) | As Of | Credit | common:LiabilitiesAndEquity |
| 18 | 02-Net Assets | Network | | | http://www.xbrlsite.com/common/role/NetAssets |
| 19 | Net Assets [Hypercube] | Hypercube | | | common:NetAssetsHypercube |
| 20 | Net Assets [Line Items] | LineItems | | | common:NetAssetsLineItems |
| 21 | Net Assets [Roll Up] | Abstract | | | common:NetAssetsRollUp |
| 22 | Assets | Concept (Monetary) | As Of | Debit | common:Assets |

If you look at each of the Excel spreadsheets, you will notice that information in those Excel spreadsheets is the same as what you see in the HTML page that you see above. The report that you will be creating does not define any elements of its own; it only references report elements from this other taxonomy, *Common Elements of Financial Statements*, which is the base XBRL taxonomy of the report we are creating.

So, the Common Elements of Financial Statements is acting similar to the base XBRL taxonomies for US GAAP or IFRS. It is small and contains fewer report elements, labels, references, structures, and associations; but the ideas are exactly the same. We are simply keeping our example small to help you understand the basic ideas of XBRL-based financial reports.

Explore the Common Elements of Financial Statements base taxonomy. Consider modifying the Excel import spreadsheets to create a different report.

Notice something as you explore. Note the report elements that have [Hypercube] and [Line Items] in their name/label. Just be aware of them for now, we will explain them in later tutorials. If you are curious and need to explore this more, please refer to the document *Representing Structures*⁶ in *Mastering XBRL-based Digital Financial Reporting*⁷. That is enough about hypercubes for now, let's move on.

⁵ Common Elements of Financial Report, http://xbrlsite.azurewebsites.net/2020/intermediate/common/common_ModelStructure.html

⁶ *Representing Structures*, http://www.xbrlsite.com/mastering/Part02_Chapter05.H_RepresentingStructuresUsingHypercubes.pdf

⁷ *Mastering XBRL-based Digital Financial Reporting*, <http://xbrl.squarespace.com/mastering-xbrl/>

Note that Luca does not have an interface for reading base taxonomies yet or creating things like associations with report elements. That functionality will be added eventually. A lot more functionality will be added⁸. Be patient, we want to get the foundation right.

Don't worry about this any more than we have mentioned right now. We will dive into this in much more detail in another tutorial.

Good job, we imported the base information and you can see what a base taxonomy looks like. Let's import everything else.

Step 3: Import Terms information.

Import the base information: (common-terms.xlsx)

| Category | StandardLabel | Prefix | ReportElementName | DataType | BalanceType | PeriodType |
|-----------|----------------------------------------------|--------|---------------------------------------|----------|-------------|------------|
| Hypercube | Balance Sheet [Hypercube] | common | BalanceSheetHypercube | | | |
| LineItems | Balance Sheet [Line Items] | common | BalanceSheetLineItems | | | |
| Abstract | Balance Sheet [Arithmetic Expression] | common | BalanceSheetSet | | | |
| Concept | Assets | common | Assets | Monetary | Debit | Instant |
| Concept | Liabilities | common | Liabilities | Monetary | Credit | Instant |
| Concept | Equity | common | Equity | Monetary | Credit | Instant |
| Hypercube | Comprehensive Income Statement [Hypercube] | common | ComprehensiveIncomeStatementHypercube | | | |
| LineItems | Comprehensive Income Statement [Line Items] | common | ComprehensiveIncomeStatementLineItems | | | |
| Abstract | Comprehensive Income [Arithmetic Expression] | common | ComprehensiveIncomeRollUp | | | |

Step 4: Import Labels information.

Import the base information: (common-labels.xlsx)

| Term | Language | LabelRole | Label |
|------------------------------|----------|---------------|----------------------------------------------------------------------------------------------------------------------------------------------------------------------------------------------------------------------------------------------------------------------------------------------|
| common:Expenses | en | Negated | (Expenses) |
| common:Losses | en | Negated | (Losses) |
| common:Equity | en | PeriodStart | Equity, Beginning Balance |
| common:Equity | en | PeriodEnd | Equity, Ending Balance |
| common:DistributionsToOwners | en | Negated | (Distributions to Owners) |
| common:Assets | en | Documentation | Assets are probable future economic benefits obtained or controlled by a particular entity as a result of past transactions or events. |
| common:Equity | en | Documentation | Equity or net assets is the residual interest in the assets of an entity that remains after deducting its liabilities. In a business enterprise, the equity is the ownership interest. |
| common:Liabilities | en | Documentation | Liabilities are probable future sacrifices of economic benefits arising from present obligations of a reporting entity that are derived from past transactions, events, or circumstances that create a present or future obligation to provide services to other entities in the future as a |

Step 5: Import References information.

Import the base information: (common-references.xlsx)

| ReportElementName | ReferenceRole | Publisher | Name | Number | Paragraph | URI | URI Date | Sequence |
|--------------------|---------------|-----------|------|--------|-----------|---------------------------------------------------------------|------------|----------|
| common:Assets | Standard | TEST | Test | 1 | 1 | http://xbrlsite.azurewebsites.net/2021/library/reference.html | 2021-02-14 | 1 |
| common:Equity | Standard | TEST | Test | 1 | 1 | http://xbrlsite.azurewebsites.net/2021/library/reference.html | 2021-02-14 | 2 |
| common:Liabilities | Standard | TEST | Test | 1 | 1 | http://xbrlsite.azurewebsites.net/2021/library/reference.html | 2021-02-14 | 3 |

Step 6: Import Structures information.

Import the base information: (common-structures.xlsx)

⁸ Recommender Systems, <http://xbrl.squarespace.com/journal/2021/9/19/recommender-systems.html>

| NetworkIdentifier | NetworkTitle | Sequence |
|---------------------|-------------------------|----------|
| BalanceSheet | 01-Balance Sheet | 1 |
| ComprehensiveIncome | 03-Comprehensive Income | 3 |
| ChangesInEquity | 07-Changes in Equity | 7 |
| CashFlow | 06-Cash Flow | 6 |
| NetAssets | 02-Net Assets | 2 |

Step 7: Import Associations information.

Import the base information: (common-associations.xlsx)

| StructureType | NetworkIdentifier | AssociationFromName | AssociationRole | AssociationToName | CalculationPolarity | PreferredLabelRole | Sequence |
|---------------|---------------------|----------------------------------------------|---------------------|----------------------------------------------|---------------------|--------------------|----------|
| Presentation | BalanceSheet | common:BalanceSheetHypercube | Parent-Child | common:BalanceSheetLineItems | | | 1 |
| Presentation | BalanceSheet | common:BalanceSheetLineItems | Parent-Child | common:AssetsRollUp | | | 2 |
| Presentation | BalanceSheet | common:AssetsRollUp | Parent-Child | common:CurrentAssets | | | 3 |
| Definition | BalanceSheet | common:BalanceSheetLineItems | RootMember-Member | common:Assets | | | 1 |
| Definition | BalanceSheet | common:BalanceSheetLineItems | Member-Member | common:Liabilities | | | 3 |
| Definition | BalanceSheet | common:BalanceSheetLineItems | Member-Member | common:Equity | | | 4 |
| Definition | BalanceSheet | common:BalanceSheetLineItems | LineItems-Hypercube | common:BalanceSheetHypercube | | | 5 |
| Presentation | ComprehensiveIncome | common:ComprehensiveIncomeStatementHypercube | Parent-Child | common:ComprehensiveIncomeStatementLineItems | | | 11 |
| Presentation | ComprehensiveIncome | common:ComprehensiveIncomeStatementLineItems | Parent-Child | common:ComprehensiveIncomeRollUp | | | 12 |
| Presentation | ComprehensiveIncome | common:ComprehensiveIncomeRollUp | Parent-Child | common:Revenues | | | 13 |
| Presentation | ComprehensiveIncome | common:ComprehensiveIncomeRollUp | Parent-Child | common:Expenses | | Negated | 14 |
| Presentation | ComprehensiveIncome | common:ComprehensiveIncomeRollUp | Parent-Child | common:Gains | | | 15 |
| Presentation | ComprehensiveIncome | common:ComprehensiveIncomeRollUp | Parent-Child | common:Gains | | Negated | 16 |

Step 8: Import Rules information.

Import the base information: (common-rules.xlsx)

| RuleType | RuleCode | Rule | Structure | Concept | Sequence | Commentary |
|-----------------|----------|----------------------------------------------------------------------------------------------------------------------------|----------------------|----------------------------|----------|------------|
| ConsistencyRule | B51 | $\$Assets = (\$Liabilities + \$Equity)$ | BalanceSheet | common:Assets | 1 | |
| ConsistencyRule | IS1 | $\$ComprehensiveIncome = (\$Revenues - \$Expenses + \$Gains - \$Losses)$ | ComprehensiveIncome | common:ComprehensiveIncome | 2 | |
| ConsistencyRule | B52 | $\$Assets = (\$CurrentAssets + \$NoncurrentAssets)$ | BalanceSheet | common:Assets | 3 | |
| ConsistencyRule | B53 | $\$Liabilities = (\$CurrentLiabilities + \$NoncurrentLiabilities)$ | BalanceSheet | common:Liabilities | 4 | |
| ConsistencyRule | B54 | $\$Equity = (\$EquityAttributableToControllingInterests + \$EquityAttributableToNoncontrollingInterests)$ | BalanceSheet | common:Equity | 5 | |
| ConsistencyRule | CF1 | $\$NetCashFlow = (\$NetCashFlowOperatingActivities + \$NetCashFlowFinancingActivities + \$NetCashFlowInvestingActivities)$ | CashFlow | common:NetCashFlow | 6 | |
| ConsistencyRule | IS2 | $\$ComprehensiveIncome = (\$IncomeFromNormalActivitiesOfEntity + \$IncomeFromPeripheralOrIncidentalTransactionsOfEntity)$ | ComprehensiveIncome2 | common:ComprehensiveIncome | 7 | |
| ConsistencyRule | NA1 | $\$NetAssets = (\$Assets - \$Liabilities)$ | NetAssets | common:NetAssets | 8 | |
| ConsistencyRule | IS3 | $\$ComprehensiveIncome = (\$NetIncome + \$OtherComprehensiveIncome)$ | ComprehensiveIncome3 | common:ComprehensiveIncome | 9 | |
| RollForwardRule | SHE1 | $\$Equity_BalanceStart + \$ComprehensiveIncome + \$InvestmentsByOwners - \$DistributionsToOwners + \$Equity_BalanceEnd$ | ChangesInEquity | common:Equity | 10 | |

Notice that there are two types of rules: ConsistencyRules and RollForwardRules. We will explain that later, for now just be aware of the difference.

Step 9: Import Facts information.

Import the base information: (common-facts.xlsx)

| ReportingEntityAspect | CalendarPeriodAspect | ConceptAspect | FactValue | Units | Rounding | Sequence |
|--------------------------------------------------------------------------------------------------------------|-------------------------|----------------------------|-----------|-------------|----------|----------|
| GH259400TOMP UOL S65II http://standards.iso.org/iso/17442 | 2020-12-31 | common:Assets | 3500 | iso4217:USD | INF | 1 |
| GH259400TOMP UOL S65II http://standards.iso.org/iso/17442 | 2020-12-31 | common:Liabilities | 0 | iso4217:USD | INF | 2 |
| GH259400TOMP UOL S65II http://standards.iso.org/iso/17442 | 2020-12-31 | common:Equity | 3500 | iso4217:USD | INF | 3 |
| GH259400TOMP UOL S65II http://standards.iso.org/iso/17442 | 2020-01-01 2020-12-31 | common:Revenues | 7000 | iso4217:USD | INF | 4 |
| GH259400TOMP UOL S65II http://standards.iso.org/iso/17442 | 2020-01-01 2020-12-31 | common:Gains | 1000 | iso4217:USD | INF | 5 |
| GH259400TOMP UOL S65II http://standards.iso.org/iso/17442 | 2020-01-01 2020-12-31 | common:Expenses | 3000 | iso4217:USD | INF | 6 |
| GH259400TOMP UOL S65II http://standards.iso.org/iso/17442 | 2020-01-01 2020-12-31 | common:Losses | 2000 | iso4217:USD | INF | 7 |
| GH259400TOMP UOL S65II http://standards.iso.org/iso/17442 | 2020-01-01 2020-12-31 | common:ComprehensiveIncome | 3000 | iso4217:USD | INF | 8 |
| GH259400TOMP UOL S65II http://standards.iso.org/iso/17442 | 2019-12-31 | common:ComprehensiveIncome | | iso4217:USD | INF | 9 |

Step 10: Generate Report (your XBRL taxonomy schema, XBRL linkbases, and XBRL instance)

You have successfully imported everything. Now, we will generate the report model and the report.

To do that, from the main form press the green “Generate report” button on the left side and you will see:



You could download each individual file by pressing the appropriate button on the left side for the file, then the “Download file” button in the lower right hand corner.

Alternatively, press the “Download All” button at the bottom LEFT of the form to download a ZIP archive that contains all XBRL files generated. Alternatively on the RIGHT you can download each file individually.

Step 10: Verify the information output into that XBRL format.

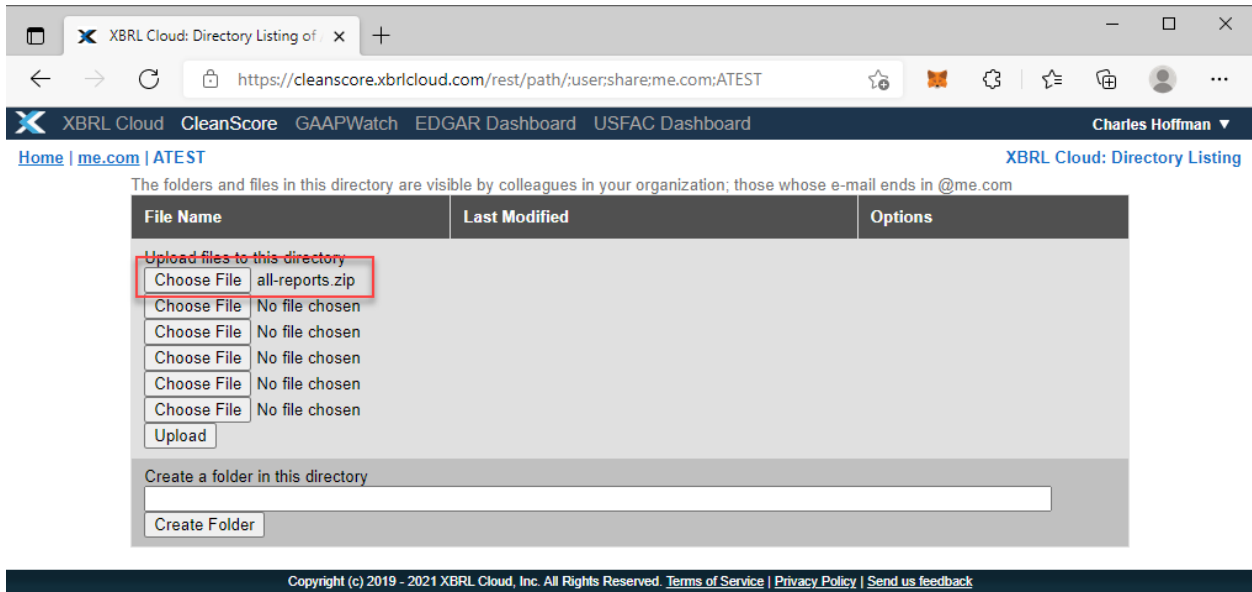
Several XBRL files will be generated that contain the information that you entered into the Luca application. You can open these files using any XBRL tool.

For this example, I will show taking the ZIP archive of files downloaded, upload the files to verify the report and report model XBRL files created by Luca using XBRL Cloud’s *CleanScore*⁹ browser-based tool which generates an *Evidence Package* for humans to review such reports.

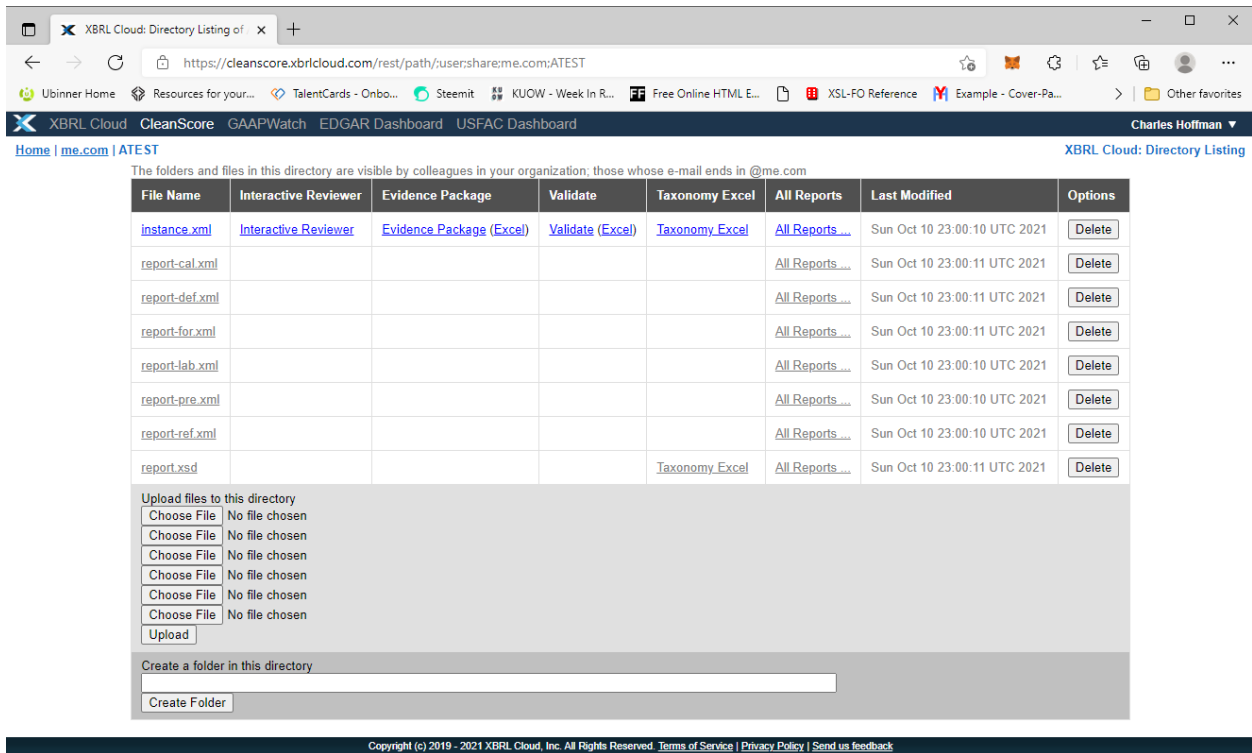
I have an account with XBRL Cloud, so I simply log into my account, create a subdirectory, and then upload the ZIP file that I received from Luca into that subdirectory:

⁹ XBRL Cloud, *CleanScore*, <https://www.xbrlcloud.com/evidence-package.html>

Here I have chosen the file to upload:



Here, the files have been uploaded:



I can do a quick check to see a summary report that lets me know if any issues were found with the XBRL-based report model or report:

Validation Summary

| Severity | Signal | Count |
|---------------|--------|-------|
| ERROR | | 0 |
| WARNING | | 0 |
| REVIEW | | 0 |
| INCONSISTENCY | | 0 |
| BEST_PRACTICE | | 0 |
| INFORMATION | | 0 |
| Total | | 0 |

No Validation Errors!

Or, I can get an Evidence Package that provides a human-readable view of the report: (I have provided a copy of this so you can download¹⁰ the Evidence Package or view it online¹¹)

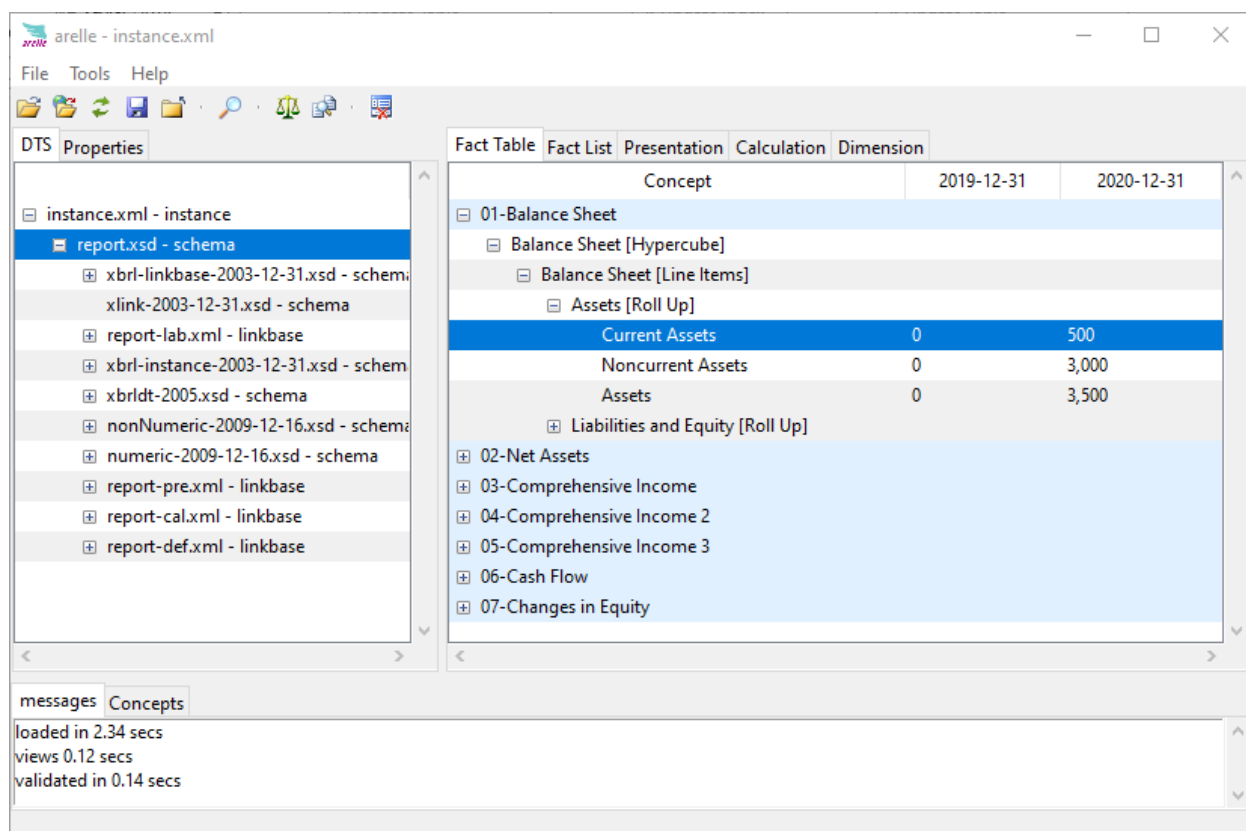
Component Perspective
Overview Perspective

| | Rendering | | | | | | | | | | | | | | | | | | | | | | | | | | | | | | | | | | | | | | | | | | | | | | | | | | | | | | |
|------------------------------------------------------------------------------------------------------------------------------------------------------------------------------------------------------------------------------------------------------------------------------------------------------------------------------------------------------------------------------------------------------------------------------------------------------------------------------------------------------------------------------------------------------------------------------------------------------------------------------------------------------------------------------------------------------------------------------------------------------------------------------------------------------------------------------------------------------------------------------------------------------------------------------------------------------------------------------------------------------------------------------------------------------------------------------------------------------------------------------------------------------------------------------------------------------------------------------------------------------------------------------------------------------------------------------------------------------------------------------------------------------------------------------------------------------------------------------------------------------------------------------------------------------------------------------------------------------------------------------------------------------------------------------------------------------------------------------------------------------------------------------------------------------------------------------------------------------------------------------------------------------------------------------------------------------------------------------------------------------------------------------------------------------------------------------------------------------------------------------------------------------------------------------------------------------------------------------------------------------------------------------------------------------------------------------------------------------------------------------------------------------------|----------------------------------------------------------------------------------------------------------------------------------------------------------------------------------------------------------------------------------------------------------------------------------------------------------------------------------------------------------------------------------------------------------------------------------------------------------------------------------------------------------------------------------------------------------------------------------------------------------------------------------------------------------------------------------------------------------------------------------------------------------------------------------------------------------------------------------------------------------------------------------------------------------------------------------------------------------------------------------------------------------------------------------------------------------------------------------------------------------------------------------------------------------------------------------------------------------------------------------------------------------------------------------------------------------------------------------------------------------------------------------------------------------------------------------------------------------------------------------------------------------------------------------------------------------------------------------------------------------------------------------------------------------------------------------------------------------------------------------------------------------------------------------------------------------------------------------------------------------------------------------------------------------------------------------------------------------------------------------------------------------------------------------------------------------------------------------------------------------------------------------------------------------------------------------------------------------------------------------------------------------------------------------------------------------------------------------------------------------------------------------------------------------------------------------------------------------------------------------------------------------------------------------------------------------------------------------------------------------------------------------------------------------------------------------------------------------------------------------------------------------------------------------------------------------------------------------------------------|------------|-----------------------------------------------------------------------------------------------------------------------------------------------|-------|---------------------------|-------------------------|--------------------------------------------------------------------------------------------------------------|----------------------------|---------------|--|--|------------|------------|-------------------------|--|--|----------------|-----|---|-------------------|-------|---|---------------|--------------|----------|-----------------------------------------|--|--|------------------------------|--|--|---------------------|---|---|------------------------|---|---|--------------------|----------|----------|-------------------------|--|--|----------------------------------------------|-------|---|-------------------------------------------------|-----|---|---------------|--------------|----------|-------------------------------|--------------|----------|
| <div style="background-color: #e6f2ff; padding: 2px;"> All Components (7) </div> <div style="border: 1px solid #ccc; padding: 2px;"> 01-Balance Sheet Balance Sheet [Hypercube] <input checked="" type="checkbox"/> Rendering Model Structure Fact Table Business Rules Combined </div> <div style="border: 1px solid #ccc; padding: 2px;"> 02-Net Assets Net Assets [Hypercube] <input checked="" type="checkbox"/> Rendering Model Structure Fact Table Business Rules Combined </div> <div style="border: 1px solid #ccc; padding: 2px;"> 03-Comprehensive Income Comprehensive Income Statement [Hypercube] <input checked="" type="checkbox"/> Rendering Model Structure Fact Table Business Rules Combined </div> <div style="border: 1px solid #ccc; padding: 2px;"> 04-Comprehensive Income 2 Comprehensive Income Statement [Hypercube] <input checked="" type="checkbox"/> Rendering Model Structure Fact Table Business Rules Combined </div> <div style="border: 1px solid #ccc; padding: 2px;"> 05-Comprehensive Income 3 Comprehensive Income Statement [Hypercube] <input checked="" type="checkbox"/> Rendering Model Structure Fact Table Business Rules Combined </div> <div style="border: 1px solid #ccc; padding: 2px;"> 06-Cash Flow Cash Flow [Hypercube] <input checked="" type="checkbox"/> Rendering Model Structure Fact Table Business Rules Combined </div> <div style="border: 1px solid #ccc; padding: 2px;"> 07-Changes in Equity Changes in Equity [Hypercube] <input checked="" type="checkbox"/> Rendering Model Structure Fact Table Business Rules Combined </div> | <div style="background-color: #e6e6e6; padding: 2px;"> Component: (Network and Table) </div> <table border="1" style="width: 100%; border-collapse: collapse;"> <tr> <td style="width: 30%;">Network</td> <td>01-Balance Sheet <small>(http://www.xbrlsite.com/role/BalanceSheet)</small></td> </tr> <tr> <td>Table</td> <td>Balance Sheet [Hypercube]</td> </tr> </table> <p>Slicers (applies to each fact value in each table cell)</p> <table border="1" style="width: 100%; border-collapse: collapse;"> <tr> <td style="width: 70%;">Reporting Entity [Axis]</td> <td>GH259400TOMPUOLS65II (http://standards.iso.org/iso/17442)</td> </tr> </table> <table border="1" style="width: 100%; border-collapse: collapse;"> <thead> <tr> <th style="width: 60%;">Balance Sheet [Line Items]</th> <th colspan="2" style="text-align: center;">Period [Axis]</th> </tr> <tr> <th></th> <th style="width: 20%;">2020-12-31</th> <th style="width: 20%;">2019-12-31</th> </tr> </thead> <tbody> <tr> <td colspan="3">Assets [Roll Up]</td> </tr> <tr> <td>Current Assets</td> <td style="text-align: right;">500</td> <td style="text-align: right;">0</td> </tr> <tr> <td>Noncurrent Assets</td> <td style="text-align: right;">3,000</td> <td style="text-align: right;">0</td> </tr> <tr> <td style="text-align: right;">Assets</td> <td style="text-align: right;">3,500</td> <td style="text-align: right;">0</td> </tr> <tr> <td colspan="3">Liabilities and Equity [Roll Up]</td> </tr> <tr> <td colspan="3">Liabilities [Roll Up]</td> </tr> <tr> <td>Current Liabilities</td> <td style="text-align: right;">0</td> <td style="text-align: right;">0</td> </tr> <tr> <td>Noncurrent Liabilities</td> <td style="text-align: right;">0</td> <td style="text-align: right;">0</td> </tr> <tr> <td style="text-align: right;">Liabilities</td> <td style="text-align: right;">0</td> <td style="text-align: right;">0</td> </tr> <tr> <td colspan="3">Equity [Roll Up]</td> </tr> <tr> <td>Equity Attributable To Controlling Interests</td> <td style="text-align: right;">3,000</td> <td style="text-align: right;">0</td> </tr> <tr> <td>Equity Attributable to Noncontrolling Interests</td> <td style="text-align: right;">500</td> <td style="text-align: right;">0</td> </tr> <tr> <td style="text-align: right;">Equity</td> <td style="text-align: right;">3,500</td> <td style="text-align: right;">0</td> </tr> <tr> <td style="text-align: right;">Liabilities and Equity</td> <td style="text-align: right;">3,500</td> <td style="text-align: right;">0</td> </tr> </tbody> </table> | Network | 01-Balance Sheet <small>(http://www.xbrlsite.com/role/BalanceSheet)</small> | Table | Balance Sheet [Hypercube] | Reporting Entity [Axis] | GH259400TOMPUOLS65II (http://standards.iso.org/iso/17442) | Balance Sheet [Line Items] | Period [Axis] | | | 2020-12-31 | 2019-12-31 | Assets [Roll Up] | | | Current Assets | 500 | 0 | Noncurrent Assets | 3,000 | 0 | Assets | 3,500 | 0 | Liabilities and Equity [Roll Up] | | | Liabilities [Roll Up] | | | Current Liabilities | 0 | 0 | Noncurrent Liabilities | 0 | 0 | Liabilities | 0 | 0 | Equity [Roll Up] | | | Equity Attributable To Controlling Interests | 3,000 | 0 | Equity Attributable to Noncontrolling Interests | 500 | 0 | Equity | 3,500 | 0 | Liabilities and Equity | 3,500 | 0 |
| Network | 01-Balance Sheet <small>(http://www.xbrlsite.com/role/BalanceSheet)</small> | | | | | | | | | | | | | | | | | | | | | | | | | | | | | | | | | | | | | | | | | | | | | | | | | | | | | | |
| Table | Balance Sheet [Hypercube] | | | | | | | | | | | | | | | | | | | | | | | | | | | | | | | | | | | | | | | | | | | | | | | | | | | | | | |
| Reporting Entity [Axis] | GH259400TOMPUOLS65II (http://standards.iso.org/iso/17442) | | | | | | | | | | | | | | | | | | | | | | | | | | | | | | | | | | | | | | | | | | | | | | | | | | | | | | |
| Balance Sheet [Line Items] | Period [Axis] | | | | | | | | | | | | | | | | | | | | | | | | | | | | | | | | | | | | | | | | | | | | | | | | | | | | | | |
| | 2020-12-31 | 2019-12-31 | | | | | | | | | | | | | | | | | | | | | | | | | | | | | | | | | | | | | | | | | | | | | | | | | | | | | |
| Assets [Roll Up] | | | | | | | | | | | | | | | | | | | | | | | | | | | | | | | | | | | | | | | | | | | | | | | | | | | | | | | |
| Current Assets | 500 | 0 | | | | | | | | | | | | | | | | | | | | | | | | | | | | | | | | | | | | | | | | | | | | | | | | | | | | | |
| Noncurrent Assets | 3,000 | 0 | | | | | | | | | | | | | | | | | | | | | | | | | | | | | | | | | | | | | | | | | | | | | | | | | | | | | |
| Assets | 3,500 | 0 | | | | | | | | | | | | | | | | | | | | | | | | | | | | | | | | | | | | | | | | | | | | | | | | | | | | | |
| Liabilities and Equity [Roll Up] | | | | | | | | | | | | | | | | | | | | | | | | | | | | | | | | | | | | | | | | | | | | | | | | | | | | | | | |
| Liabilities [Roll Up] | | | | | | | | | | | | | | | | | | | | | | | | | | | | | | | | | | | | | | | | | | | | | | | | | | | | | | | |
| Current Liabilities | 0 | 0 | | | | | | | | | | | | | | | | | | | | | | | | | | | | | | | | | | | | | | | | | | | | | | | | | | | | | |
| Noncurrent Liabilities | 0 | 0 | | | | | | | | | | | | | | | | | | | | | | | | | | | | | | | | | | | | | | | | | | | | | | | | | | | | | |
| Liabilities | 0 | 0 | | | | | | | | | | | | | | | | | | | | | | | | | | | | | | | | | | | | | | | | | | | | | | | | | | | | | |
| Equity [Roll Up] | | | | | | | | | | | | | | | | | | | | | | | | | | | | | | | | | | | | | | | | | | | | | | | | | | | | | | | |
| Equity Attributable To Controlling Interests | 3,000 | 0 | | | | | | | | | | | | | | | | | | | | | | | | | | | | | | | | | | | | | | | | | | | | | | | | | | | | | |
| Equity Attributable to Noncontrolling Interests | 500 | 0 | | | | | | | | | | | | | | | | | | | | | | | | | | | | | | | | | | | | | | | | | | | | | | | | | | | | | |
| Equity | 3,500 | 0 | | | | | | | | | | | | | | | | | | | | | | | | | | | | | | | | | | | | | | | | | | | | | | | | | | | | | |
| Liabilities and Equity | 3,500 | 0 | | | | | | | | | | | | | | | | | | | | | | | | | | | | | | | | | | | | | | | | | | | | | | | | | | | | | |

¹⁰ XBRL Cloud Evidence Package Download, <http://xbrlsite.azurewebsites.net/2021/Luca/common/evidence-package.zip>

¹¹ XBRL Cloud Evidence Package available online, <http://xbrlsite.azurewebsites.net/2021/Luca/common/evidence-package>

Alternatively, you can download the open source XBRL processor GUI Arelle¹² and use that to verify the XBRL-based financial report you created using Luca:



Arelle is a bit technical oriented...ok, well; it is quite technical oriented. It does most of what you need, but you have to invest in learning how to use the tool effectively. The price is good (i.e. free).

Step 11: Viewing Report and Report Model.

Next, you can view the report model and report you created using the free working proof of concept Pesseract¹³. You can download and use Pesseract free for non-commercial purposes. Contact me (Charles.Hoffman@me.com) and ask me for a license and I will send you a license. This application does require Windows 7 or 10. Pesseract does some XBRL syntax verification, but it is not yet a fully conformant XBRL processor.

Here is what the report and the report model look like in Pesseract:

¹² Arelle Download, <https://arelle.org/arelle/pub/>

¹³ Pesseract, <http://pesseract.azurewebsites.net/>

Report:

The screenshot shows the XBRL Viewer interface displaying a financial report. The main window is titled 'Instance (instance.xml) - Pesseract'. The report is for '01-Balance Sheet' and is presented as a table with two columns for periods: '2020-12-31' and '2019-12-31'. The report is structured as follows:

| Balance Sheet [Line Items] | 2020-12-31 | 2019-12-31 |
|-------------------------------------------------|--------------|------------|
| Assets [Roll Up] | | |
| Current Assets | 500 | 0 |
| Noncurrent Assets | 3,000 | 0 |
| Assets | 3,500 | 0 |
| Liabilities and Equity [Roll Up] | | |
| Liabilities [Roll Up] | | |
| Current Liabilities | | |
| Noncurrent Liabilities | | |
| Equity [Roll Up] | | |
| Equity Attributable To Controlling Interests | | |
| Equity Attributable To Noncontrolling Interests | | |

A 'Fact Characteristics and Properties' dialog box is open, showing details for the selected fact:

- Reporting Entity: GH259400TOMPULS65II http://standards.iso.org/iso/17442
- Period: 2020-12-31
- Concept: Current Assets
- Fact Value: 500
- Units: iso4217:USD
- Decimals (rounding): 0
- Nil:

Report model:

The screenshot shows the XBRL Viewer interface displaying the Taxonomy model for the report. The main window is titled 'Taxonomy (report.xsd) - Pesseract'. The 'Taxonomy View' is shown in 'Presentation View' for the 'English' language. The model structure is as follows:

| Element Type | Name | Data Type | Balance | Period | Order |
|--------------|-----------------------------------|-----------|---------|----------|-------|
| Table | common:BalanceSheetHypercube | String | na | duration | 0 |
| Abstract | common:BalanceSheetLineItems | String | na | duration | 1.0 |
| Abstract | common:AssetsRollUp | String | na | duration | 2.0 |
| Element | common:CurrentAssets | Monetary | debit | instant | 3.0 |
| Element | common:NoncurrentAssets | Monetary | debit | instant | 4.0 |
| Element | common:Assets | Monetary | debit | instant | 5.0 |
| Abstract | common:LiabilitiesAndEquityRollUp | String | na | duration | 6.0 |
| Abstract | common:LiabilitiesRollUp | String | na | duration | 7.0 |
| Element | common:CurrentLiabilities | Monetary | credit | instant | 9.0 |
| Element | common:NoncurrentLiabilities | Monetary | credit | instant | 10.0 |
| Element | common:Liabilities | Monetary | credit | instant | 11.0 |
| Abstract | common:EquityRollUp | String | na | duration | 8.0 |

The 'Element' pane on the right shows the properties for the selected 'Assets' element:

- Type: xbrli:monetaryItemType
- Substitution Group: xbrli:item
- Period Type: instant
- Balance: debit
- Abstract: False
- Nilable: True
- Prefix: common

The 'References' pane shows a reference to the SFAC document:

```
Reference 1: reference
-Name: SFAC
-Number: 6
-Paragraph: 25
-Publisher: FASB
-URI:
https://www.fasb.org/jsp/FASB/Document_CID
ocumentPage?cid=1218220132802&acceptedDis
claimer=true
-URIDate: 2020-02-27
```

Some Final Thoughts

You might be asking yourself, “Why can’t I do all the things you walked me through here using three or four different software applications all within ONE software application?” And that would be an excellent question.

The answer to that question is that we are getting there. XBRL-based digital financial reporting is evolving slowly. Software is getting easier to use and functionality is increasing. Software will get where it needs to be. If not, then XBRL-based digital financial reporting will remain a small niche.

But if software vendors figure out XBRL-based digital financial reporting, and I believe they will; then accountants will have a new way to create general purpose financial reports better, faster, and cheaper than today’s contemporary approach.

Your next step is to try the MINI Tutorial.